



2025

ANNUAL REPORT

T A B L E O F C O N T E N T S

Message from the team	03
2025 overview	04-06
Projects' Highlights	07-27
Community Support	28-32
From Seed to Impact	33-34
Donors & Partners	35

Message from the Team

In 2025, uncertainty was not an exception; it was the reality shaping the lives of thousands of families and communities across Lebanon. The aftermath of the 2024 war in South Lebanon left behind widespread destruction, repeated displacement, and deep emotional and social challenges that affected not only communities, but also humanitarian and educational teams working on the ground. Several members of ALPHA's Tibnin team experienced displacement themselves while continuing to support affected families and ensure the continuity of critical services.

Amid ongoing economic hardship, insecurity, and instability, many children, youth, and families continued to navigate daily challenges affecting their well-being, stability, and sense of hope. Yet even within these difficult circumstances, we witnessed something deeply powerful: resilience, solidarity, and the determination of communities to keep moving forward.

Throughout the year, ALPHA Association remained committed to standing beside communities by creating safe spaces for children, empowering youth leadership, promoting environmental responsibility, and strengthening emotional and social well-being.

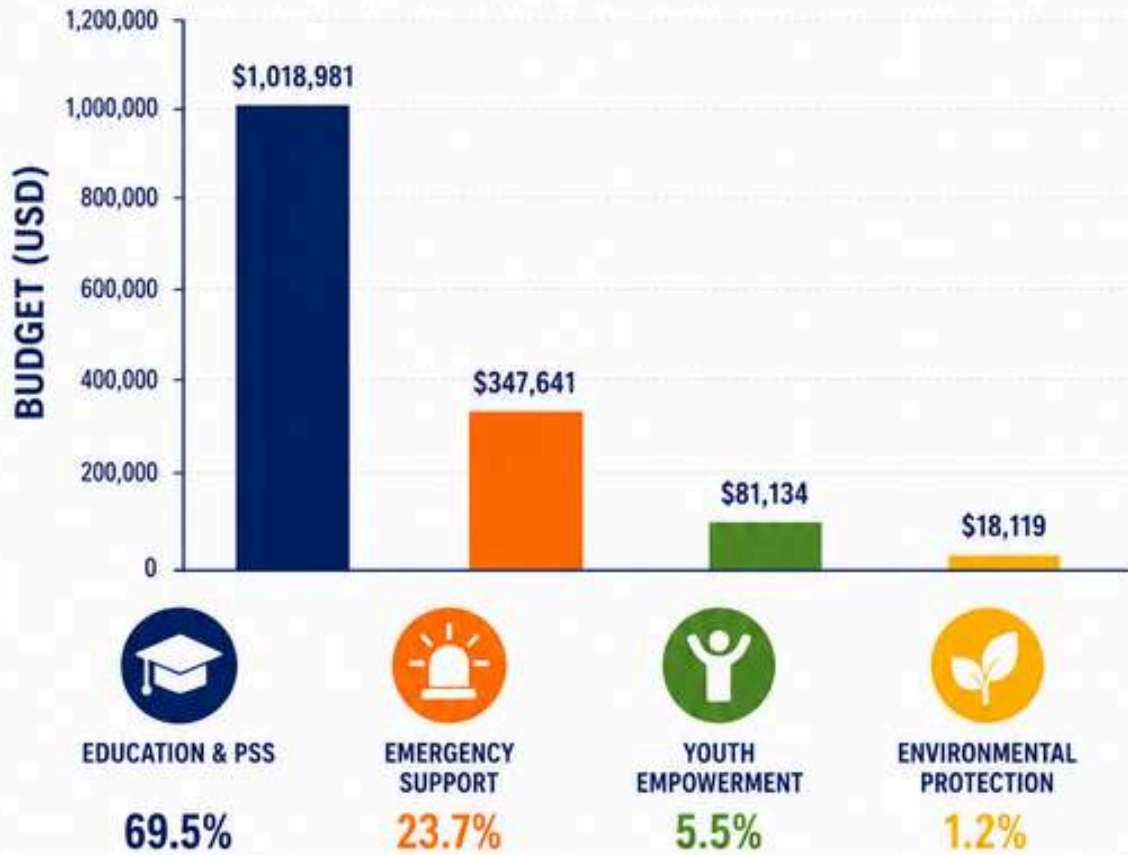
Whether through psychosocial support activities in schools and early childhood centers, youth-led environmental initiatives, humanitarian response efforts, or community engagement programs, our work focused on one constant priority: supporting people with dignity, care, and hope during times of uncertainty.

This year reminded us that meaningful change does not depend on perfect conditions. It grows through presence, partnership, compassion, and persistence. Every child who regained confidence in a classroom, every young person who discovered their voice, every family that felt supported, and every community initiative that inspired participation reflected the importance of collective action rooted in humanity and trust.

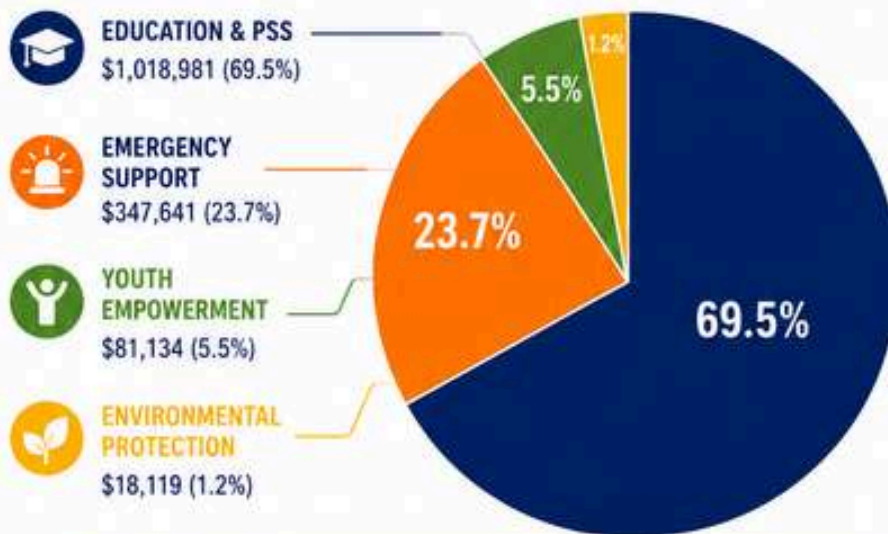


2025 Overview

SECTORS OF INTERVENTION



BUDGET ALLOCATION BY SECTOR



TOTAL BUDGET

\$1,465,875.00



12,091

Total Number of Beneficiaries

GEOGRAPHICAL AREAS OF INTERVENTION





LEBANON

-  Burj Hammoud (Beirut)
-  Wadi Al Karm (Mount Lebanon)
-  Ghazze (Bekaa)
-  Tibnin (South Lebanon)
-  Tyre (South Lebanon)
-  Saïda (South Lebanon)



IRAQ

-  Baghdad City
-  Basrah

PROJECTS'HIGHLIGHTS

A'Risheh Know & Grow Youth Environmental Center



Cultivating Environmental Awareness, Youth Leadership, and Community Connection Nestled in the natural landscape of Wadi El Karm, the A'Risheh Ecological Center continued to serve as more than an environmental space in 2025, it became a hub for learning, inclusion, youth engagement, and sustainable community action.

Through environmental education, hands-on activities, psychosocial integration, and community initiatives, A'risheh created opportunities for children, youth, and families to reconnect with nature while strengthening environmental responsibility, creativity, and social participation.

At A'Risheh, learning extended beyond theory. Participants explored sustainability through direct experience, planting, creating, observing, experimenting, and engaging with the environment in meaningful and accessible ways.

Environmental Education Through Experience



In collaboration with Save the Children, the A'Risheh team conducted environmental school tours designed to introduce students to practical and sustainable solutions for everyday environmental challenges.

Through interactive workshops and hands-on learning activities, children explored:

- hygiene and food safety
- waste management and recycling
- Composting and circular environmental practices
- school-based green initiatives

These experiences helped students better understand the connection between environmental protection, public health, and community wellbeing, while encouraging environmentally responsible habits from an early age.

By turning environmental concepts into engaging and experiential learning opportunities, A'Risheh empowered children to become more curious, aware, and actively involved in creating positive change within their schools and communities.





Eco Classrooms

<https://www.youtube.com/watch?v=QfhX2wU62LI>

Inclusive Environmental Education



Save the Children
إنقاذ الأطفال

A’Risheh continued promoting eco-inclusion by ensuring that environmental education and nature-based experiences remain accessible to individuals of all abilities, including children with disabilities.

Through both indoor and outdoor environmental learning activities, the ALPHA Association A’Risheh team engaged children in interactive experiences that encouraged participation, exploration, and connection with nature. These activities aimed to foster inclusivity, environmental awareness, and equal access to meaningful educational experiences for all participants.



Environmental Education for all

<https://www.youtube.com/watch?v=FkX4pcQ8CEw>

From September 6–8, 2025, ALPHA Association, alongside A’Risheh Know & Grow Youth Environmental Center — an initiative that emerged from ALPHA’s Agri Youth program in Wadi El Karm, Lebanon — participated in the regional Annual Learning Event in Amman under the BAWSA LA project, hosted by Save the Children International.

The event brought together partner organizations from Egypt, Lebanon, Jordan, Iraq, and Yemen to collaboratively prepare for a regional cybersecurity awareness campaign scheduled for September–December 2025. Through workshops, collaborative discussions, and the development of youth-focused awareness tools such as podcasts and educational activities, the gathering strengthened regional cooperation around digital safety and youth engagement.

Building on this regional experience and its ongoing partnership with Save the Children International, ALPHA Association implemented cybersecurity and cyberbullying awareness activities in Lebanon through the A’Risheh project. The A’Risheh team received specialized training on cybersecurity and online safety, strengthening their capacity to engage adolescents and youth on responsible digital practices and cyberbullying prevention.

As part of the local implementation phase, the team developed awareness posters and conducted educational sessions for students aged 13 and above in schools, promoting safer online behavior, digital responsibility, and greater awareness of cybersecurity risks. Through this initiative, A’Risheh expanded its youth-led community engagement approach beyond environmental awareness to also include digital well-being and safer digital participation for young people.



Amman, Jordan





Beirut, Lebanon



Regional Leadership & Agroecology Exchange



Perla Naaman, Director of the A'Risheh Ecological Center, supported by ALPHA Association and Agence Française de Développement, was selected among Lebanon's representatives in the NABTA program.

Funded by Agence Française de Développement, deployed by Campus Groupe AFD, and operated by INCO, the program brought together 25 young changemakers from across the Mediterranean region to exchange knowledge, strengthen regional collaboration, and promote sustainable development initiatives.

During the program in Tunis, Perla led a workshop highlighting the importance of agroecology in building resilient and nature-positive communities. The session emphasized sustainable environmental practices, community resilience, and the role of youth-led initiatives in shaping a more sustainable future for the region.



A'Risheh at the Exhibition of Social Associations Strengthening Environmental Awareness and Local Collaboration

The Exhibition of Social Associations in Bourj Hammoud represented a meaningful milestone for A'Risheh. The initiative was organized in coordination with the Coordination Committee in Bourj Hammoud and Sin El Fil, as well as the Bourj Hammoud Municipality.

The project itself was born from the ideas, energy, and aspirations of the youth in the area. Bringing the initiative back to the community it serves created a valuable opportunity to reconnect directly with local residents and beneficiaries while showcasing the impact of youth-led environmental action.

Participation in the exhibition strengthened collaboration and networking with local organizations and stakeholders, creating space for deeper reflection on the community's evolving needs and on how practical environmental initiatives can be more effectively linked to technical and educational approaches.

The exhibition also served as an important platform for promoting environmental awareness within the community. While environmental concerns may not always be perceived as an immediate priority, A'Risheh sought to encourage youth and community members to gradually adopt more environmentally conscious perspectives and practices. This engagement reinforced the value of peer-to-peer initiatives led by youth for youth, while increasing local interest in and visibility of environmental issues in Bourj Hammoud.



Supporting Local Heritage & Youth-Led Production

Through the A’Risheh initiative in Wadi El Karm, youth participants engaged in the production of traditional Lebanese “moune” products using sustainable and locally rooted agricultural practices.

From planting and harvesting to sun-drying and preparation, young participants contributed to every stage of the production process, helping preserve traditional food practices while strengthening their practical skills and connection to the land.

Produced under the sun of Wadi El Karm and carefully prepared using natural methods, these traditional products reflect the initiative’s commitment to environmental sustainability, local heritage preservation, and youth empowerment through hands-on agricultural engagement.



Community Engagement & Nature-Based Activities

Throughout the year, A’Risheh strengthened its role as a community-centered environmental space by organizing activities that encouraged connection with nature, community engagement, and wellbeing.

The A’Risheh Center in Wadi El Karm hosted open gatherings that welcomed visitors from within and beyond the village, creating opportunities for social connection through music, bonfires, traditional food, herbal drinks, and cultural activities in harmony with nature.

A’Risheh also introduced guided hiking experiences, beginning with a trail from Zabbougha to Wadi El Karm, encouraging participants to explore local landscapes and reconnect with nature. Activities often concluded with traditional saj breakfasts at the center, reflecting the initiative’s spirit of hospitality and community.

In addition, community breakfasts and open-door gatherings helped strengthen ties with local residents and further establish A’Risheh as an inclusive environmental and cultural space that promotes wellbeing, environmental appreciation, and community belonging.



Media Visits & Youth Exchange

A'Risheh welcomed the team from Ici Beyrouth, a francophone media platform, to the environmental center in Wadi El Karm. The visit created an opportunity for exchange between two young and passionate teams around themes of nature, environmental education, and inclusion, while highlighting the role of youth-led initiatives in community engagement and sustainable development.



Community Participation & Sustainable Agriculture Promotion

A'Risheh participated in the *Marché aux Fleurs* in Bikfaya, where youth participants showcased homegrown herbs and aromatic plants cultivated at the center. The event provided an opportunity to engage with visitors, promote sustainable agricultural practices, and share A'Risheh's vision of reconnecting communities with nature and local food production. Through this participation, the team strengthened community outreach efforts while highlighting the role of youth-led environmental initiatives in promoting sustainability and ecological awareness.



Ecotherapy & Nature-Based Learning

Through its partnership with MISEREOR, A'Risheh continued integrating structured ecotherapy into its nature-based educational activities at the environmental center in Wadi El Karm. Through interactive tools such as a herbarium, insectarium, and terrarium, children and youth explored local biodiversity while strengthening environmental awareness, mindfulness, and emotional well-being. These hands-on experiences encouraged curiosity, resilience, and a deeper connection with nature, contributing positively to participants' mental, emotional, and social development.

The Roots of Change

Launched in partnership with Deutsche Gesellschaft für Internationale Zusammenarbeit (GIZ), the Roots of Change project was implemented at the A'Risheh Center by the dedicated A'Risheh team. The initiative aims to foster social stability through inclusive environmental action by engaging children, youth, and persons with disabilities in awareness sessions and community-led green initiatives. Through active participation and collective action, the project seeks to create lasting environmental and social impact at the community level.

Alpha's Southern Lebanese Office

Despite the difficult conditions that continued to affect South Lebanon during the recovery period following the war, ALPHA remained committed to sustaining its educational and psychosocial support projects across the region. Communities were still living under uncertainty, with many families returning to heavily damaged villages amid ongoing fear and instability despite the ceasefire.

Several schools in the area had suffered severe damage, forcing students and teachers to adapt to temporary learning spaces while waiting for rehabilitation and reopening. Despite the destruction at Kabrikha School, students continued to show remarkable resilience and commitment to their education, reflecting the determination of communities to move forward despite hardship.

As part of ALPHA's recovery and educational support efforts, activities gradually resumed in public schools. At Tibnin Complimentary School, fun and engaging kindergarten sessions brought moments of joy, learning, and emotional relief to young children after months of instability. Creative art classes also resumed at Tibnin Public School, providing students with a safe space to express themselves, reconnect socially, and rediscover their creativity through artistic activities.

The recovery phase also deeply impacted community participation. Many parents remained hesitant to send their children to activities due to ongoing safety concerns, and public engagement stayed limited for several months. As a result, some community events, commemorative activities, and teacher trainings initially planned during the year had to be postponed, adapted, or conducted on a smaller scale in response to the realities on the ground.

Despite these challenges, ALPHA continued implementing its interventions with flexibility, care, and dedication, prioritizing the wellbeing, safety, and continuity of support for children, youth, and educators throughout South Lebanon.

KNH - BMZ – Improving Quality Education in Public Schools



Rebuilding connection. Restoring hope. Strengthening schools.



In Tibnin and Kabrikha, schools are more than classrooms. They are spaces of resilience, especially in times marked by uncertainty and recovery.

With the generous support of the Federal Ministry for Economic Cooperation and Development (BMZ) and Kindernothilfe (KNH), ALPHA worked hand in hand with public schools to nurture not only academic growth but also emotional well-being and community connection.

From lively sports sessions echoing with laughter to computer literacy classes opening doors to digital opportunity, students were given tools to grow with confidence. Art-based psychosocial activities became safe spaces for expression — where children painted their feelings, shaped their stories, and found comfort in creativity. Every activity carried a simple but powerful intention: to help children feel seen, safe, and capable.



At Tibnin Public Kindergarten, a simple day turned into a celebration of togetherness. Seventy-five children, joined by 42 mothers, 10 fathers, teachers, and the ALPHA team, gathered not for lessons but for connection.

Side by side, parents and children prepared fruit salad, crafted colorful creations, painted smiling faces, and read stories together. Laughter filled the space. Mothers made heartfelt efforts to cooperate and engage. Teachers connected with families beyond formal meetings. It was a reminder that trust grows in shared moments, in small gestures, in eye contact, in hands working together.



In Kabrikha, the end-of-year celebration carried the aroma of homemade breakfast and the warmth of shared joy. Mothers and children cooked, played bonding games, and created memories that extended beyond the school gates. The atmosphere was pure connection, simple, genuine, and deeply needed.

During a dedicated psychosocial session in Kabrikha, families were invited to reflect in a different way. Each parent and child created a symbolic avatar, a portrait of identity and emotion. They wrote what they loved about themselves and about each other. They shared how they wished to be seen. They listened, sometimes discovering feelings that had never been voiced before. In those quiet conversations, trust deepened. Bonds strengthened. Love became visible in words.



Supporting Those Who Support Children

Behind every resilient child stands a teacher who continues to show up, even while carrying their own grief.

Recognizing this, psychologist Dr. Giovanna Zwen facilitated group therapy sessions for teachers in Tibnin and Kabrikha. Many had endured immense personal loss, including homes and loved ones. Their pain was collective.

These sessions offered something rare: a safe space for educators to express emotions, share experiences, and begin healing together. By caring for teachers' wellbeing, the project ensured that classrooms remained places of empathy, stability, and hope.



Despite the conflict and displacement in South Lebanon, ALPHA remained committed to ensuring the continuity of education for affected children. Following the destruction in Aita Al Shaab, Early Childhood Education activities were relocated to Tibnin and Homework Support sessions to Haddata, allowing displaced children and children from host communities to continue learning in safe and supportive environments. Through these adaptations, ALPHA helped children maintain their educational progress while promoting their wellbeing and resilience during a period of uncertainty.

Where little hands learn, and little hearts grow

At the Early Childhood Education (ECE) Center in Tibnin, childhood is protected with intention. Supported by Kindernothilfe (KNH Germany), the Clear Horizon Project was designed not only to prepare children aged 4–6 for school, but to prepare them for life.

In classrooms filled with color, movement, and gentle guidance, learning unfolded as a holistic journey, nurturing emotional security, cognitive development, and joyful discovery.



Stories That Felt Like Home

Through storytelling sessions at the ECE Center, children found a safe space to express emotions, strengthen language skills, and explore their imagination. Books became a source of comfort, connection, and confidence, helping children feel heard, understood, and emotionally supported.



Discovering the World, One Concept at a Time

Through hands-on exploration and creative activities, children developed early cognitive and mathematical skills by comparing objects, recognizing shapes, and engaging in playful learning experiences. Guided by curiosity and discovery, they gradually built logical thinking, fine motor skills, and confidence in a natural and supportive learning environment.



When Autumn Became a Classroom

Through seasonal activities inspired by autumn, children strengthened fine motor skills, creativity, focus, and sensory awareness while exploring nature and collaborative learning. From coloring and dot painting to collecting leaves and creating sensory boards, children discovered the beauty of seasonal change through hands-on exploration and imagination.



Movement as a Path to Confidence

Through daily exercises and sensory-motor activities, children developed strength, coordination, focus, and body awareness in a joyful and active learning environment. Movement-based learning helped regulate emotions, build self-confidence, and support both physical and cognitive development.



Learning to Understand Feelings

At the heart of Clear Horizon was emotional development. Children participated in structured psychosocial sessions designed to help them recognize and manage their emotions. They learned that happiness, sadness, and anger are natural and valid.

Through storytelling, guided reflection, and expressive activities, children began to:

- Identify what they were feeling
- Express emotions in healthy ways
- Develop simple coping strategies
- Communicate more effectively with peers

As part of its efforts to support returnee children in South Lebanon through innovative and future-oriented education, ALPHA implemented step-by-step Artificial Intelligence (AI) training sessions introducing children to coding, Scratch programming, and the basics of Machine Learning.

Participants learned how to create their own projects using coding techniques and explored image and text recognition models by training computers through practical examples and integrating AI models into Scratch projects. These hands-on activities encouraged creativity, critical thinking, and digital skills development among children affected by displacement and conflict. using coding techniques and explored image and text recognition models by training computers through practical examples and integrating AI models into Scratch projects. These hands-on activities encouraged creativity, critical thinking, and digital skills development among children affected by displacement and conflict.

Reflecting on her experience, participant Fatima Mahmoud Fran described the training as “a wonderful and enriching experience,” expressing her enthusiasm to continue learning at more advanced levels.



The Clear Horizon Project reminds us that quality early education is not measured only by academic readiness. It is measured by confidence in a child’s voice. By the steadiness of their steps. By their ability to name a feeling, to explore a leaf, to recognize a circle, to listen to a story and see themselves within it.



Academic Year 2024–2025 - Empowering Children Through Education and Psychosocial Support

In communities affected by displacement, instability, and prolonged uncertainty, schools became more than places of learning; they became spaces of protection, emotional support, and renewed hope.

Through the UNICEF-supported DIRASA Program, implemented across partner schools in Tyre and Saida districts, ALPHA Association integrated education, psychosocial support, child protection, and life-skills programming to help children reconnect with learning while strengthening their emotional well-being and sense of safety.

By combining academic support with psychosocial and protection-focused interventions, the program contributed to creating more inclusive, supportive, and child-friendly learning environments where students could feel seen, heard, and protected.

Creating Safer and More Supportive Schools

At Al I'dadiya Intermediate School and Lycée Mondial School, ALPHA's Child Protection Officer, Gracia Aoun, delivered safeguarding and referral mechanism training sessions for education staff and school focal points. The trainings focused on the early identification of violence against children, safe disclosure pathways, and proper referral procedures in line with child protection standards.

These efforts strengthened schools' internal protection systems and enhanced the capacity of educational teams to respond to children's needs in a timely, confidential, and supportive manner, helping create safer environments for vulnerable students. Interactive anti-bullying sessions were also conducted with students across participating schools in South Lebanon. Through guided discussions, role-play, and group reflection exercises, children explored respect, empathy, safe communication, and positive peer interaction.

The sessions encouraged students to better understand the impact of harmful behaviors, strengthen conflict-resolution skills, and contribute to building more respectful and inclusive classroom environments where children felt safer and more connected to their peers.



Supporting Emotional Well-being Through Psychosocial Activities

Throughout the academic year, structured psychosocial support activities created safe spaces where children affected by displacement, academic disruption, and social stress could express themselves freely and rebuild emotional resilience.

Through storytelling, art-based expression, games, movement, and facilitated group dialogue, children were encouraged to identify emotions, strengthen communication skills, and develop healthier coping mechanisms.

These activities helped many children regain confidence, improve social interaction, and experience a stronger sense of belonging within the school environment.

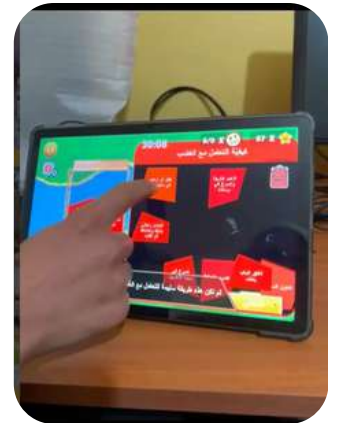
One of the psychosocial activities that left a meaningful impact was the “Magic Box” session. Each child was invited to open a box containing a mirror alongside the message:

“In this box, you will see the best kid in the world.”

The activity encouraged children to recognize their own value and uniqueness, reinforcing self-esteem and reminding them that every child deserves care, respect, and confidence in their abilities.



At Lycée Kafra School, students also engaged with “Daleela,” an educational psychosocial game designed to support emotional development through interactive learning experiences. By progressing through different levels and challenges, children strengthened creativity, motivation, emotional awareness, and problem-solving skills in a fun and supportive environment.



Reconnecting Children With Learning

Education reintegration activities supported displaced and out-of-school children through remedial learning and literacy reinforcement sessions designed to help students bridge academic gaps and regain confidence in the classroom.

To further strengthen learning opportunities, the Akelius digital language-learning platform was introduced in partner schools across South Lebanon. Through interactive digital exercises and engaging language activities, students improved communication skills while developing greater motivation and enthusiasm for learning.

The integration of digital learning tools helped create more stimulating and inclusive classroom environments, particularly for children who had experienced interruptions in their education.

Children also participated in AI and Scratch digital skills sessions, where they explored foundational coding concepts, digital literacy, and creative problem-solving. These activities encouraged analytical thinking, curiosity, teamwork, and confidence in using technology, helping students build skills increasingly important for their future education and opportunities.

The integration of digital learning tools helped create more stimulating and inclusive classroom environments, particularly for children who had experienced interruptions in their education.

Children also participated in AI and Scratch digital skills sessions, where they explored foundational coding concepts, digital literacy, and creative problem-solving. These activities encouraged analytical thinking, curiosity, teamwork, and confidence in using technology — helping students build skills increasingly important for their future education and opportunities.



Encouraging Confidence, Creativity, and Positive Participation

Beyond academic learning, the DIRASA Program encouraged children to reconnect with joy, creativity, and positive social interaction.

School festivals and engagement activities celebrated students' achievements throughout the academic year while strengthening children's sense of belonging and connection to their schools.

At Lycée Kafra School, winter-themed art activities transformed seasonal learning into creative, hands-on experiences where children explored educational concepts through imagination and artistic expression.

Health and hygiene awareness sessions conducted at Al I'dadiya Intermediate School also helped students better understand the relationship between personal hygiene, physical health, emotional well-being, and self-confidence through interactive demonstrations and child-friendly activities.



Empowering Girls Through Life Skills and Inclusion

Through guided discussions, group reflection, and participatory activities, girls developed stronger communication skills, greater self-awareness, and increased confidence in navigating adolescence safely and positively.

By investing in girls' wellbeing and leadership potential, the program helped empower participants to recognize their value, express themselves more confidently, and envision safer and more hopeful futures.



Through the Power 4 Girls Program, girls aged 11–14 from diverse nationalities and educational backgrounds, including girls with disabilities, participated in structured life-skills sessions aimed at strengthening confidence, emotional well-being, and social inclusion.

Implemented across Lycée Mondial, Al I'dadiya School, Lycée Kafra, and Al-Amin School, the program focused on:

- building self-confidence
- strengthening life skills
- promoting healthy and respectful relationships
- creating safe and inclusive spaces for girls

Despite the severe challenges caused by the 2024 war in South Lebanon, ALPHA successfully adapted its interventions to ensure the continuity of support for vulnerable children, families, and staff members affected by displacement and insecurity. During the emergency phase, activities temporarily shifted toward psychosocial support, humanitarian aid distributions, and staff care interventions, reaching more than 600 children, 120 families, and 40 ALPHA staff members in safer areas.

Following the ceasefire, ALPHA progressively resumed its educational and psychosocial activities in Sawaneh and Haddata, providing Early Childhood Education (ECE), remedial support sessions, and caregiver support programs. Through structured learning, play-based activities, and psychosocial interventions, children strengthened their emotional well-being, coping skills, school readiness, and social relationships, while caregivers reported increased confidence in supporting their children during difficult circumstances.

The project also highlighted the importance of staff well-being during crises. Through a dedicated Staff Care Program, ALPHA provided group and individual psychological support sessions addressing stress management, burnout prevention, grief, and coping strategies for team members affected by war and displacement. Despite difficult conditions and ongoing instability, the program fostered resilience, emotional expression, and collective support among participants, reinforcing the essential role of mental health and psychosocial care in humanitarian response and recovery efforts.



Damma Learning Center 2025

Ghazze, Bekaa, Lebanon



DAMMA – Youth Advocacy

Damma Project – Empowering Children and Youth as Agents of Change

Through the Damma project, ALPHA Association worked to empower vulnerable Lebanese and Syrian children and youth to become active, responsible, and engaged members of their communities despite the difficult social, economic, and security conditions affecting the region. By combining education, psychosocial support, environmental awareness, creativity, and community participation, the project created safe spaces where children could learn, express themselves, and develop essential life and leadership skills.

This year, special focus was placed on empowering Syrian refugee students as agents of change by adapting workshops that encouraged them to actively contribute to the future social development of their home cities and villages. Through participatory activities covering project design, planning, and budgeting, students developed practical community-oriented initiatives that reflected both their aspirations and the needs they identified within their communities. Their proposed projects included a women's health dispensary, an improved English education program, a modern kindergarten, and a neighborhood football team.

In parallel, children and youth participated in environmental awareness campaigns, recycling initiatives, volunteer activities, creative learning programs, and psychosocial support sessions that strengthened their self-confidence, teamwork, communication skills, and sense of social responsibility. Despite the war and displacement crisis, ALPHA Association ensured the continuity of education and psychosocial support through flexible learning methods and emergency response efforts, helping children cope with fear, stress, and instability while reinforcing resilience, empathy, and positive community engagement.



COMMUNITY SUPPORT

Kfardounine - South Lebanon

In partnership with Expertise France and Agence Française de Développement, ALPHA promoted renewable energy and water conservation through solar panel installation and community awareness workshops.

Through the installation of solar panels on public facilities and a series of engaging awareness workshops for children, youth, and families, the ‘Towards a Sustainable Town’ project is bringing renewable energy and water conservation to life. Implemented by Alpha Association in collaboration with the Municipality of Kfardounine and supported by Shabake – Expertise France, the project not only powers public buildings sustainably but also empowers the community to adopt eco-friendly habits and protect their natural resources for generations to come.



Collaborative Action for Community Recovery



During the recovery period in South Lebanon, ALPHA played an active role in supporting affected communities and strengthening coordination between international organizations and local municipalities. Through its deeply rooted presence in the region, ALPHA worked closely with Médecins Sans Frontières (MSF), local authorities, and partners to respond to urgent humanitarian and health needs.

On February 11, ALPHA facilitated a coordination meeting in Aitaroun to discuss the establishment of a prefabricated medical center to replace the village’s destroyed health facility, serving both Aitaroun and neighboring areas through volunteer doctors and collaborative support.

In parallel, ALPHA, in partnership with MSF and the Kalaa Union of Municipalities, distributed essential humanitarian aid to returnees and vulnerable families in several southern villages, including water and hygiene kits, mattresses, blankets, heaters, protective masks, and other basic necessities. Overall, 7,800 individuals benefited from these interventions.

To support the continuity of relief operations, a secure humanitarian depot was also established in Tibnin for the storage and distribution of aid across the region.

Through these efforts, ALPHA reaffirmed its commitment to standing alongside vulnerable communities during the recovery phase, promoting solidarity, dignity, and access to essential support services.



Livelihood & Support

Thanks to private donations, ALPHA Association supported vulnerable farming families affected by war and displacement through the distribution of laying hens and roosters. This initiative helped improve food security, create small sources of income, and restore hope for families rebuilding their lives. Beyond its economic impact, the initiative also encouraged responsibility, care, and resilience within households, especially among children, contributing to the gradual recovery of community life in affected villages.

Addressing Poverty Through Community-Based Action

On the International Day for the Eradication of Poverty, Janine Naufal—President of the Bourj Hammoud and Sin El Fil Coordination Committee and representative of Alpha Association, joined “Radio Voice of Van” to discuss the Exhibition of Social Associations in Bourj Hammoud. Alpha’s Social Assistance Program aims to break the cycle of poverty in all its forms, whether financial, educational, or social, by providing access to education and essential support for those who need it most



Aid Distribution

The aftermath of the 2024 war still lingers. Displaced families from Bekaa and South Lebanon remain unable to return to their homes and villages, having now settled in the outskirts of Beirut.

ALPHA and C'est La Vie, a local NGO based in Nabaa-Bourj Hammoud, continue to stand by them by providing food baskets, hygiene kits, and a reminder that they are not forgotten.



The project was initially designed before the ceasefire of November 27, 2024, and its launch was planned for December 2024. However, due to delays in the receipt of funds and the incomplete completion of the first phase, a reassessment of the situation was conducted and an amendment was requested in order to better respond to the actual needs of beneficiaries following the war and displacement crisis.

The final objectives of the project focused on meeting the essential needs of families still affected by mass displacement, as well as those who had returned to their villages, while also strengthening the resilience and well-being of the ALPHA Tebnine team through financial and psychosocial support.

The project successfully distributed food baskets and hygiene kits to 740 displaced and returning families across several villages in South Lebanon, including:

- 50 families in Bourj Hammoud
- 150 families in Tebnine
- 100 families in Rmeich
- 60 families in Ain Ebel
- 100 families in Bourj el-Moulouk
- 100 families in Jdaydet Marjayoun
- 80 families in Deir Mimas
- 100 families in Klayaa

In addition, 91 families from Tebnine and surrounding areas received kitchen kits after the ceasefire to support their return and daily living conditions.

The intervention also provided financial assistance to 10 displaced or returning ALPHA employees, while 50 members of the ALPHA Tebnine team participated in a self-care excursion aimed at strengthening staff well-being and resilience during a highly stressful period.

Despite the challenging context, all the objectives were successfully achieved. The project adopted a flexible and gender-sensitive approach, ensuring equal participation and access to support while giving particular attention to vulnerable groups, including pregnant women, elderly persons, and individuals with disabilities.

Overall, the project contributed to mitigating the effects of displacement and return by improving the living conditions and well-being of vulnerable families and staff members through food, material, financial, and psychosocial support adapted to the realities of the post-war recovery phase.

The Book is My Friend – Expanding Horizons

Launched in 2022 with the support of the Magic Library Foundation, The Book is My Friend has evolved into a thriving reading initiative that continues to inspire children and youth. Since its inception, participation has grown significantly, increasing from 300 to more than 850 enthusiastic young readers.

This remarkable growth can be attributed to two key factors. First, improved access to books has helped overcome barriers created by high costs and the increasing dominance of digital screens, allowing children to rediscover the pleasure of reading. Second, facilitators trained by the theatrical troupe Zoukak have brought stories to life through dynamic and interactive storytelling sessions, fostering curiosity, imagination, and a lasting connection with books.

The program's expansion reflects its positive impact on children's reading habits and reinforces ALPHA's commitment to nurturing a culture of reading among younger generations. We extend our sincere gratitude to the Magic Library Foundation for its trust, partnership, and continued support in making this achievement possible.

Despite the challenges posed by conflict, displacement, and uncertainty, we remain hopeful that The Book is My Friend will continue to grow and inspire, providing children with a welcoming space where reading becomes a source of joy, discovery, and opportunity.



**FROM SEED TO
IMPACT**

From Seed to Impact Five Years of Partnership and Purpose



When ALPHA Iraq was founded in March 2020, we had little more than a conviction that people deserve better, and that something meaningful could be built from the ground up, even in the most difficult of circumstances. What we did have, from the very beginning, was ALPHA Beirut. Their support didn't just open doors; it gave us roots.

Over the five years that followed, that partnership quietly shaped everything we became. It showed up in the field, not in press releases. It held steady through a pandemic, through displacement, through the kind of challenges that test whether a partnership is real or merely convenient.

During COVID-19, we launched an online medical lecture platform — a bridge between Iraqi doctors abroad and the healthcare community at home, at a moment when that connection mattered most. We rehabilitated a clinic inside the Abu Ghraib camp, so that the families living furthest from the system could still reach care. We carried clean water to remote villages through WASH projects, opened educational support classrooms for children falling behind, and began turning waste into something useful through recycling and environmental initiatives.

None of it was glamorous. All of it was necessary.

Five years of real partnership looks like this: two organizations that learned to trust each other not through agreements, but through the accumulated weight of showing up — again and again — when it was hard.

In 2025, that trust found a new home.

At Al-Bayan University in Baghdad, a campus alive with more than 9,300 students, 210 faculty members, and 10 colleges, ALPHA Iraq planted something new. Two projects, side by side, each one a different answer to the same question: how do we turn education into opportunity, and opportunity into lasting change?



The first is **Nawaia** — an organic waste recycling and natural fertiliser production project. It takes what is thrown away and finds the value inside it. It creates jobs. It closes loops. It makes the invisible visible.



The second is the **New Scope Innovation Incubator** — a space for graduates and young people who have ideas but no runway. It exists to change that. To sit with someone who has a vision and no resources and help them build something real.



Today, ALPHA Iraq is something we could not have imagined in 2020, not because the vision has changed, but because the work has proven it possible.

We are building a model that holds education, sustainability, entrepreneurship, and people all at once. Because we believe, without reservation, that real investment begins with a human being, and its returns are felt by the whole community, and the land beneath it.

The seed was planted in 2020.
It is bearing fruit today.
And tomorrow — it will be a forest.

Zeina Hatem

*Founder — Humanitarian Rehabilitation
Association for Education and Health
ALPHA Iraq Baghdad, Iraq | 2025*

Donors & Partners



Magic Libraries
foundation



Association Libanaise pour la Promotion Humaine et l'Alphabétisation
(ALPHA)

P.O. Box: 16 - 5441

Beirut, Lebanon

Sawma Building, 1st Floor

Pierre Gemayel Street, Ain el Remmaneh

Beirut, Lebanon Tel/Fax: +961 (0)1 281319

Mobile: +961 (0)3 726768
info@alpha-association.info